

MDUSBC Super Senior Masters (40 Mic)



Oil Pattern Distance: **41 Feet**
 Forward Oil Total: **16.56 mL**
 Forward Boards Crossed: **414 Boards**

Reverse Brush Drop: **39 Feet**
 Reverse Oil Total: **9.52 mL**
 Reverse Boards Crossed: **238 Boards**

Oil Per Board: **40 uL**
 Volume Oil Total: **26.08 mL**
 Total Boards Crossed: **652 Boards**

	Start	Stop	Loads	Speed	Crossed	Start	End	Feet	T.Oil
1	2L	2R	3	10	111	0.0	2.8	2.8	4440
2	6L	6R	1	10	29	2.8	4.2	1.4	1160
3	7L	7R	2	14	54	4.2	8.1	3.9	2160
4	8L	8R	2	14	50	8.1	12.0	3.9	2000
5	9L	9R	3	14	69	12.0	17.9	5.9	2760
6	10L	10R	3	14	63	17.9	23.8	5.9	2520
7	11L	11R	2	18	38	23.8	28.9	5.1	1520
8	2L	2R	0	18	0	28.9	41.0	12.1	0

Conditioner:
Type In or Select One

TransferType:
Type In or Select One

Forward
Reverse
More

	Start	Stop	Loads	Speed	Crossed	Start	End	Feet	T.Oil
1	2L	2R	0	30	0	41.0	34.0	-7.0	0
2	10L	10R	3	22	63	34.0	24.7	-9.3	2520
3	9L	9R	2	18	46	24.7	19.6	-5.1	1840
4	8L	8R	3	18	75	19.6	12.0	-7.6	3000
5	7L	7R	2	18	54	12.0	6.9	-5.1	2160
6	2L	2R	0	14	0	6.9	0.0	-6.9	0

Forward
Reverse
More

Conditioner:
Type In or Select One

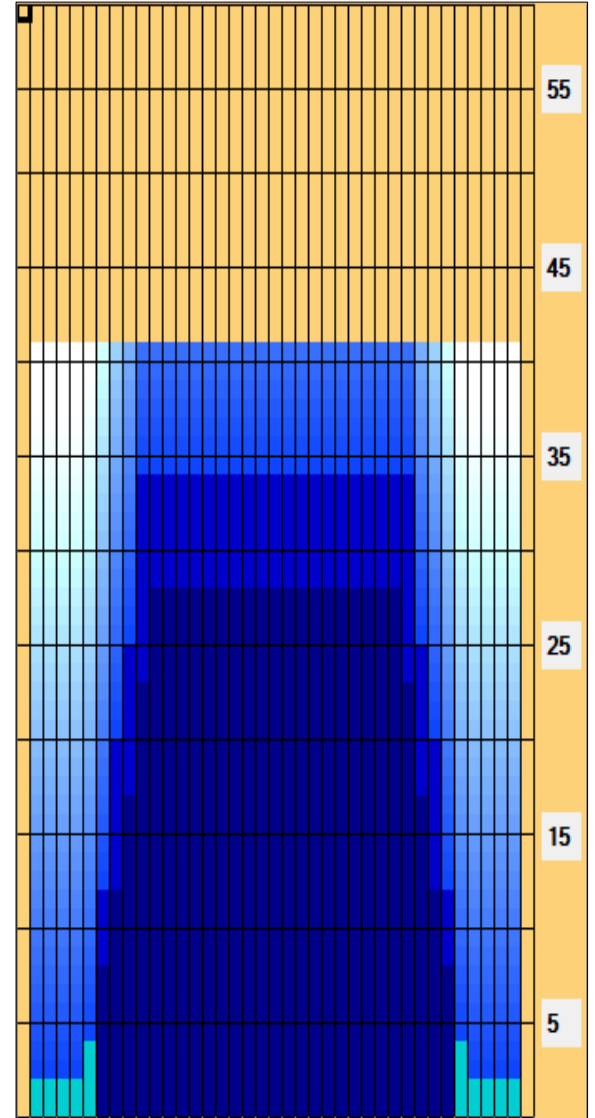
TransferType:
Type In or Select One

Forward

Reverse

Combined

Buff



Item	3L-7L:18L-18R	8L-12L:18L-18R	13L-17L:18L-18R	18L-18R:17R-13R	18L-18R:12R-8R	18L-18R:7R-3R
Description	Outside Track:Middle	Middle Track:Middle	Inside Track:Middle	Middle: Inside Track	Middle:Middle Track	Middle:Outside Track
Track Zone Ratio	6.19	1.21	1	1	1.21	6.19

